

Landscape Lighting Supply Company



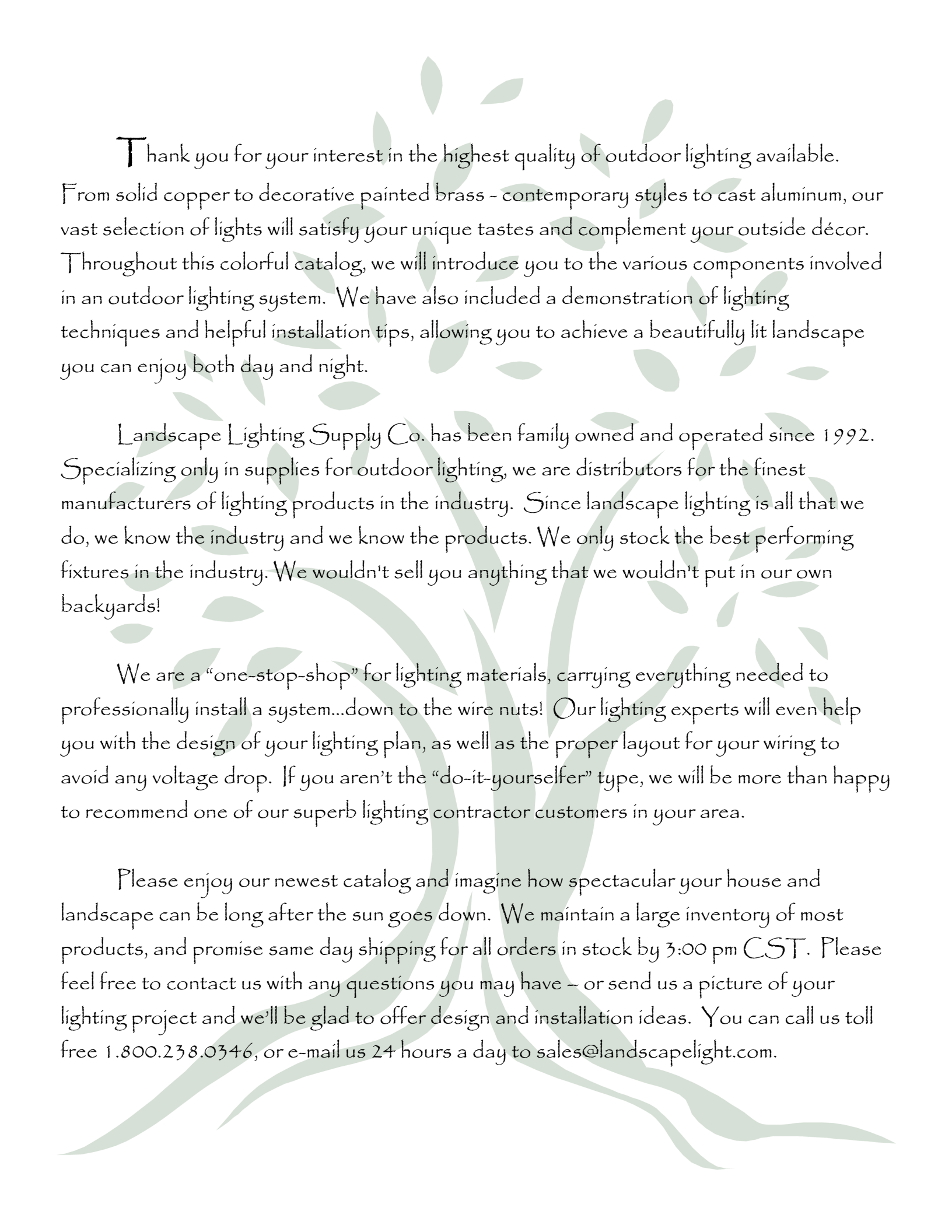
*Celebrating our 32nd year as **THE**
“one stop shop” for high-end outdoor lighting!*

780 S. Floyd Rd.
Richardson, TX 75080
972.480.9700
www.landscapelight.com



Proud distributors of **Moon Visions Lighting**

~Born and Bred in TEXAS!~



Thank you for your interest in the highest quality of outdoor lighting available. From solid copper to decorative painted brass - contemporary styles to cast aluminum, our vast selection of lights will satisfy your unique tastes and complement your outside décor. Throughout this colorful catalog, we will introduce you to the various components involved in an outdoor lighting system. We have also included a demonstration of lighting techniques and helpful installation tips, allowing you to achieve a beautifully lit landscape you can enjoy both day and night.

Landscape Lighting Supply Co. has been family owned and operated since 1992. Specializing only in supplies for outdoor lighting, we are distributors for the finest manufacturers of lighting products in the industry. Since landscape lighting is all that we do, we know the industry and we know the products. We only stock the best performing fixtures in the industry. We wouldn't sell you anything that we wouldn't put in our own backyards!

We are a “one-stop-shop” for lighting materials, carrying everything needed to professionally install a system...down to the wire nuts! Our lighting experts will even help you with the design of your lighting plan, as well as the proper layout for your wiring to avoid any voltage drop. If you aren't the “do-it-yourselfer” type, we will be more than happy to recommend one of our superb lighting contractor customers in your area.

Please enjoy our newest catalog and imagine how spectacular your house and landscape can be long after the sun goes down. We maintain a large inventory of most products, and promise same day shipping for all orders in stock by 3:00 pm CST. Please feel free to contact us with any questions you may have – or send us a picture of your lighting project and we'll be glad to offer design and installation ideas. You can call us toll free 1.800.238.0346, or e-mail us 24 hours a day to sales@landscapelight.com.

Table of Contents

- Moon Visions 120V & 12V LEDs _____ 2~3
- Replacement 120V & 12V LEDs _____ 4~5
- FX Luminaire LED Lights _____ 6
- RGB Color~Changing & Smart Control Options _____ 7
- Low Voltage Bullets & Floods _____ 8~9
- Low Voltage Path Lights _____ 10~11
- Low Voltage Step & Deck Lights _____ 12~13
- Low Voltage Recessed Lights & Ingrounds _____ 14
- Specialty Lights _____ 15
- Line Voltage Bullets, Floodlights & Ingrounds _____ 16~17
- Transformers & Lighting Accessories _____ 18~19
- Design & Installation Guide _____ 20~24
- Terms & Conditions of Sales _____ 25



120V LED Bullet Lights by Moon Visions



LED MV 120V R38

22W PAR38 E26
50,000 Hour Rated Life
Lumens: 1900/1700

5000K = 25°, 40°, 50°, 80°
3500K = 40°, 80°



MVL~D 120V

LED R38 Downlight Includes:
BR40-120V bullet
DSA10 glare shield
TM tree mount with installation
hardware



MVL~U 120V

LED R38 Uplight Includes:
BR40-120V bullet
USR40 cast upshield

Note: mount not included



LED MV 120V R30

14W & 7W PAR30 E26
50,000 Hour Rated Life
14W Lumens: 1400/1300
7W Lumens: 655/600

5000K = 25°, 40°, 50°, 80°
3500K = *15°, *30°, 40°, 80°
*14W only



MVM-D 120V

LED R30 Downlight Includes:
BR30-120V bullet
DSA8 glare shield
TM tree mount with installation
hardware



MVM-U 120V

LED R30 Uplight Includes:
BR30-120V bullet
USR30 cast upshield

Note: mount not included



LED MV 120V R20

2.5W & 5W PAR20 E26
50,000 Hour Rated Life
5W Lumens: 440/388

5000K = *25°, 40°, *50°, 80°
3500K = *15°, *30°, 40°, 80°
*available in 5W only



MVS-D 120V

LED R20 Downlight Includes:
BR20-120V bullet
DSA6 glare shield
TM tree mount with installation
hardware



MVS-U 120V

LED R20 Uplight Includes:
BR20-120V bullet
USR20 cast upshield

Note: mount not included



12V LED Bullet Lights by Moon Visions



LED MV 12V R38

22W PAR38 GU24
50,000 Hour Rated Life
Lumens: 1900/1700

5000K= 25°, 40°, 50°, 80°
3500K = 40°, 80°



MVL-D GU24

LED R38 Downlight Includes:
BR40-12V bullet
DSA10 glare shield
TM tree mount with installation
hardware



MVL-U GU24

LED R38 Uplight Includes:
BR40-12V bullet
USR40 cast upshield

Note: mount not included



LED MV 12V R30

14W & 7W PAR30 GU24
50,000 Hour Rated Life
14W Lumens: 1400/1300
7W Lumens: 655/600

5000K= 25°, 40°, 50°, 80°
3500K = *15°, *30°, 40°, 80°
*14W only



MVM-D GU24

LED R30 Downlight Includes:
BR30-12V bullet
DSA8 glare shield
TM tree mount with installation
hardware



MVM-U GU24

LED R30 Uplight Includes:
BR30-12V bullet
USR30 cast upshield

Note: mount not included



LED MV 12V R20

2.5W & 5W PAR20 GU24
50,000 Hour Rated Life
5W Lumens: 440/388

5000K= *25°, 40°, *50°, 80°
3500K = *15°, *30°, 40°, 80°
*available in 5W only



MVS-D GU24

LED R20 Downlight Includes:
BR20-12V bullet
DSA6 glare shield
TM tree mount with installation
hardware



MVS-U GU24

LED R20 Uplight Includes:
BR20-12V bullet
USR20 cast upshield

Note: mount not included

120V LED PAR Replacement Lamps



LED MV 120V 22W R38
 Warm White (3500K) and Cool
 White (5000K)
 50,000 Hour Rated Life
 For use in MVL-U or MVL-D
 Lumens: 1700/1900



LED MV 120V 14W R30
 Warm White (3500K) and Cool
 White (5000K)
 50,000 Hour Rated Life
 For use in MVM-U or MVM-D
 Lumens: 1300/1400



LED MV 120V 5W R20
 Warm White (3500K) and Cool
 White (5000K)
 50,000 Hour Rated Life
 For use in MVS-U or MVS-D
 Lumens: 388/440



LED MS 18W PAR38
 Cool White (6000K)
 36° Beam Spread
 30,000 Hour Rated Life
 For use in MVL-U or MVL-D
 Lumens: 1400



LED MS 14W PAR30
 Cool White (6000K)
 60° Beam Spread
 30,000 Hour Rated Life
 For use in MVM-U or MVM-D
 Lumens: 900



LED MS 10W PAR20
 Cool White (6000K)
 36° Beam Spread
 30,000 Hour Rated Life
 For use in MVS-U or MVS-D
 Lumens: 850



LED ST 15W PAR38
 Warm White (3000K)
 and Cool White (5000K)
 40° Beam Spread
 25,000 Hour Rated Life
 For use in MVL-U or MVL-D
 Lumens: 1200 (5K)



LED ST 13W PAR30
 Warm White (3000K)
 and Cool White (5000K)
 40° Beam Spread
 25,000 Hour Rated Life
 For use in MVM-U or MVM-D
 Lumens: 1000 (5K)



LED ST 7W PAR20
 Warm White (3000K)
 and Cool White (5000K)
 40° Beam Spread
 25,000 Hour Rated Life
 For use in MVS-U or MVS-D
 Lumens: 525 (5K)

All 120V LED PAR Replacement lamps have 3 Year Limited Warranty

12V LED Lights & Replacement LED Lamps



LED EA MR16

1W 85-130 lm
 3 W 220-330 lm
 5W 450-500 lm
 7W 540-640 lm
 2700K, 3000K, 5700K
 Limited Lifetime Warranty



LED EA MR11

1.5W 135 lm
 3W 270 lm
 2700K, 3000K, 5700K
 Limited Lifetime Warranty



LED BL AR11 2W

Lumens: 120
 2700K & 5700K
 Equivalent to 20watt halogen
 lamps; Replaces a GBF lamp
 50,000 Hours/5 Year Warranty



LED EA G4

1.5W 2700K 150 lm
 2.5W 2700K 250 lm
 Limited Lifetime Warranty



LED EA BAY

2W 2700K 200 lm
 4W 2700K 400 lm
 Limited Lifetime Warranty



LED EA MR8

2W 2700K 150 lm
 Limited Lifetime Warranty



ECOSTAR LED BL MR16

4 watts (Lumens: 265/300)
 2700K & 3000K in 30° & 60°
 Rated Life: 30,000 Hours
 3 Year warranty



LED EA S8

4W 2700K 400 lm
 Wedge replacement for
 #3155 & #3156 lamps
 Limited Lifetime Warranty



LED EA T5

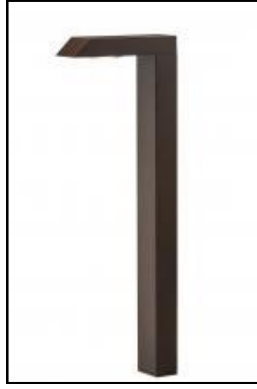
2.5W 2700K 250 lm
 Wedge replacement for T5 lamps
 Limited Lifetime Warranty

12V LED Lights by FX Luminaire



M-PZ~3LED Pathlight*

Finish Shown: Black
Integrated 4W LED
Height: 22"



M-PL~1LED Pathlight*

Finish Shown: Bronze
Integrated 2.5W LED
Height: 22"



FC-GW~1LED

Finish Shown: Bronze
Integrated 2W LED
90, 180, 270 or 360°



PB~3LED~BZ*

Finish Shown: Bronze
4.5W LED Floodlight; Comes with stake mount and 3 color corrective lenses for warm white, cool white and neutral white.



LC~9LED~BZ*

Finish Shown: Bronze
13W LED Floodlight; Comes with stake mount and 3 color corrective lenses for warm white, cool white and neutral white.



FB~3LED~BZ*

Finish Shown: Bronze
4.5W LED Uplight; Comes with stake mount and 3 color corrective lenses for warm white, cool white and neutral white.



PL~SB Pathlight*

Finish Shown: Sedona Brown
Lamp: 1.6W 2700K (Incl)
Height: 15"



TM~BZ Pathlight*

Finish Shown: Bronze
Lamp: 1.6W 2700K (Incl)
Height: 15"



FC~9LED~BZ

Finish Shown: Antique Tumbled Bronze
13W LED Inground; Comes with 3 color corrective lenses for warm, cool, and neutral white

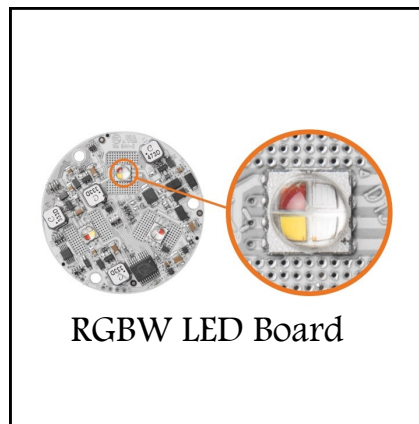
***Includes ground mounting stake.**

RGB Color-Changing Options & Smart Controls



Luxor Zoning Dimming System

- The Luxor ZDC control system combines all the features of a Luxor ZD plus the ability to control up to 30,000 colors using RGBW technology. For unique looks throughout the year, adjust color temperatures to complement vegetation and architecture. RGBW technology provides elegant colors for spectacular effects.
- Luxor ZD and Luxor ZDC controllers are the brains of the Luxor lighting control system. The controllers communicate with the integrated fixtures via the two-wire path.
- FX integrated fixtures come standard with zoning capabilities. Optional dimming and color control are also available for maximum design flexibility.
- Optional wireless control with the Luxor app makes system design and control simple and convenient. Luxor controllers can be wirelessly connected with the WIFI-MOD or hardwired using the LAN-MOD.



Brilliance Smart Socket

- Plugs into any transformer
- Uses Wi-Fi controlled with Brilliance Smart app
- Provides remote control of your entire lighting system from anywhere in the world



VIVID MR16

- Drop in lamp can be used in any MR16 fixture
- 5W 40° Fixed 3000K with RGB color mixing LED diodes
- Dimmable with most magnetic transformers
- 25,000 hour/ 5 year warranty
- Bluetooth, app controlled



Brilliance MR16

- Drop in lamp can be used in any MR16 fixture
- 6W 38° 2200K-5700K and RGB color wheel
- Astronomical timer & schedule timer
- 50,000 hour/ 5 year warranty
- Wi-Fi, app controlled

12V Bullets & Floods



MVS-D MR16

Finish Shown: Green
Lamp: 1W-7W LED MR16



MVS-U MR16

Finish Shown: Bronze
Lamp: 1W-7W LED MR16



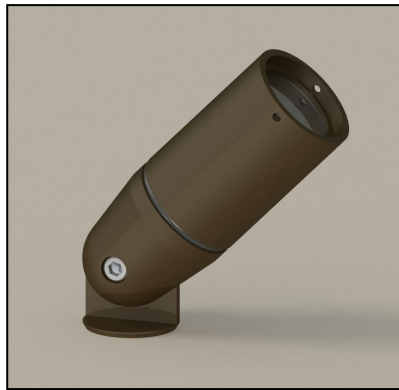
RS Bullet*

Finish Shown: Bronze
Lamp: 1W-7W LED MR16



15517 MR16 Bullet*

Finish Shown: Brass
Lamp: 1W-7W LED MR16



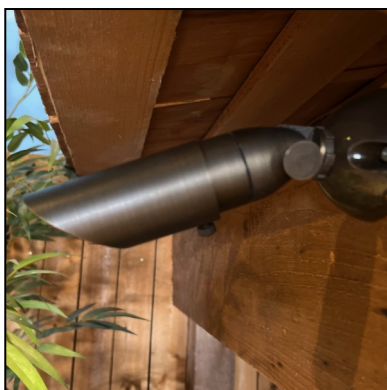
HL300 BZ

Finish Shown: Bronze
Lamp: 1.5-3W LED MR8



HL360

Finish Shown: Bronze
Lamp: 1W-7W LED MR16



15484 MR11 Bullet*

Finish Shown: Weathered Brass
Lamp: 3W LED MR11



MP-20*

Finish Shown: Bronze
Lamp: 3W LED MR11



MVM-DT

Finish Shown: Green
Lamp: LED PAR36 or AR111
shown with optional louver

***Includes ground mounting stake.**

12V Bullets & Floods



WAC 5011 Bullet*
Finish Shown: Bronze
3000K LED 10-60°
Adjustable 2,4,8, 13 & 16W



WAC 5021 Flood*
Finish Shown: Bronze
3000K LED 50°x 80°
Adjustable 2,4,8, 13 & 16W



WAC 5031 Inground
Finish Shown: Bronze
3000K LED 15-60°
Adjustable 2,4,7,10 & 12W
Tilt and Aim -20° to +20°



RL~20 Flood*
Finish Shown: Solid Copper
Lamp: LED G4



WAC 5111 Mini-Bullet*
Finish Shown: Bronze
3000K LED 10°-50°
Adjustable 1,2,4, 6 & 7W



WAC 5121 Mini-Flood*
Finish Shown: Bronze
2700K/3000K LED 50°x 80°
Adjustable 1,2,4,6 & 8W



***Includes ground mounting stake.**

12V Path Lights



6011~30BZ*

Finish Shown: Bronze
Integrated 5.8W 3000K
Height: 22"



6091~30BZ*

Finish Shown: Bronze
Integrated 3W 3000K
Height: 23"



6061~27BZ *

Finish Shown: Bronze
Integrated 6.5W 2700K
Height: 23.5"



SC~LED20~12R*

Finish Shown: Solid Copper
Lamp: 1.6W 2700K (Incl)
Height: 15"



DL~LED20~12R*

Finish Shown: Solid Copper
Lamp: 1.6W 2700K (Incl)
Height: 15.75" (12R) 21.75" (18R)



CA~LED20~12R*

Finish Shown: Solid Copper
Lamp: 1.6W 2700K (Incl)
Height: 15"



TD12*

Finish Shown: Solid Copper
Lamp: #93 13W (Incl)
Height: 18"



SP~LED20~12R*

Finish Shown: Solid Copper
Lamp: 1.6W 2700K (Incl)
Height: 15"



15478 CBR

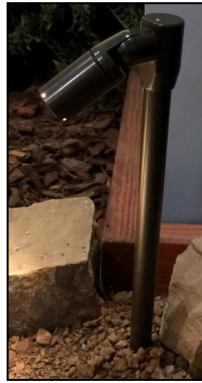
Finish Shown: Centennial Brass
Lamp: LED G4 not included
Height: 21"

***Includes ground mounting stake.**

12V Path Lights



6401~30BZ*
 Finish Shown: Bronze
 Integrated 6W 3000K
 7.25" x 2.25"



MR8 Pathlight*
 Finish Shown: Bronze
 Lamp: 1.5W LED MR8
 12" Bronze riser w/ stake



15014*
 Finish Shown: Bronze
 Integrated 4W 2700K LED
 Height: 15"



6021~30BZ*
 Finish Shown: Bronze
 Integrated 2.9W LED
 Height: 23.5"



16012*
 Finish Shown: Matte Bronze
 Lamp: 1.5W G4 LED
 Height: 21.5"



16010*
 Finish Shown: Matte Bronze
 Lamp: 1.5W G4 LED
 Height: 15.5"



SP-A*
 Finish Shown: Flat Black
 Lamp: 1.6W 2700K (Incl)
 Height: 15"



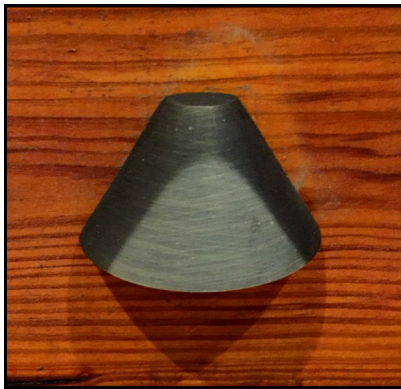
PR-4704*
 Finish Shown: Bronze
 Lamp: LED G4
 Height: 15.75"



PM-20*
 Finish Shown: Flat Black
 Lamp: LED MR16
 Height: 14"

***Includes ground mounting stake.**

12V Surface Mounted Step & Deck Lights



16805 MZ

Finish Shown: Matte Brass
Integrated 2W 2700K LED



15222 BK

Finish Shown: Black
Integrated 2W 2700K LED



QL~1LED~BZ

Finish Shown: Bronze
Integrated 2W 2700K LED



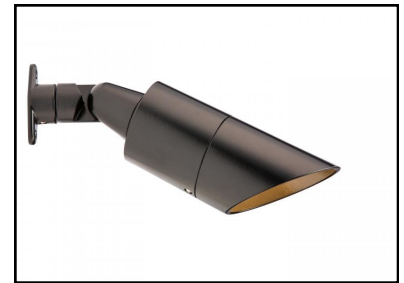
RC~3LED Eave Light

Finish Shown: White
Integrated LED
Available in RGB



MM~LED20W

Finish Shown: Bronze
Lamp: 1.6W LED G4



MD~NL~BZ

Finish Shown: Bronze
Lamp: LED MR16



15228 BZ

Finish Shown: Bronze
Integrated 2.5W 2700K LED



4501-30BK

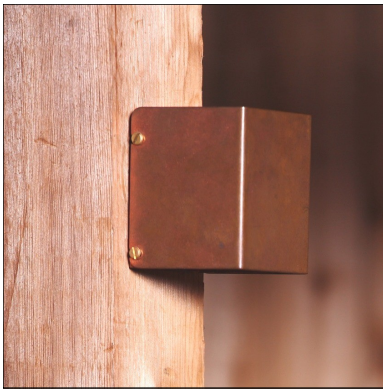
Finish Shown: Black
Integrated 4W 3000K LED
No back box needed



4901-30BZ

Finish Shown: Bronze
8W Integrated LED 3000K
No back box needed

12V Surface Mounted Step & Deck Lights



TC20 Beam Lite

Finish Shown: Solid Copper
Lamp: LED 2W AR11



3021-30BZ

Finish Shown: Matte Bronze
Integrated LED 2.8W 3000K



LS12

Finish Shown: Solid Copper
Lamp: LED BAY



HL~340~2X

Finish Shown: Bronze
Lamp: (2) LED MR16s



12V Bistro Lights

24' Strands, 2' spacing
2W S14 LED lamps included
Wet location rated



LF~1LED

Finish Shown: Bronze
Lamp: 2W Integrated LED



Orion

Finish Shown: Weathered Brass
Lamp: 2W LED G4



Guadalupe

Finish Shown: Black
Lamp: 3.8W Integrated LED



3031-30BZ

Finish Shown: Bronze
2.8W Integrated LED 3000K

Recessed Step & Deck Lights



WAC 4011 BZ

Finish Shown: Bronze
Integrated 2W 2700K LED
Fits in 2x4 junction box



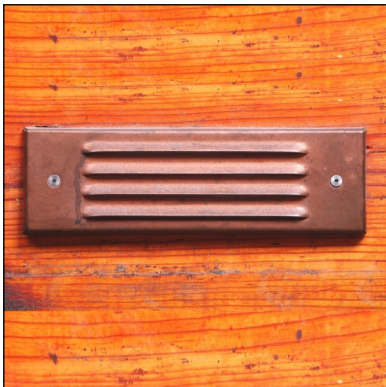
RH-3LED-W-BZ

Finish Shown: Bronze
Integrated 4W 2700K LED
Fits in 2x4 junction box



HS-2LED-W-BZ

Finish Shown: Bronze
Integrated 3.5W 2700K LED



LM-LED40W

Finish Shown: Solid Copper
Lamps: (2) LED G4 2700K



CP-LED20W

Finish Shown: Solid Copper
Lamp: LED G4 2700K



FX MO-3LED-BZ

Finish Shown: Bronze
Integrated 4.5W LED

12V Inground Lights



15495 CBR

Finish Shown: Bronze
Lamp: 1-7W LED MR16



RP-NL-LV-CB

Finish Shown: Camo Bronze
Lamp: 1-7W LED MR16



FC-NL-CW-CB

Finish Shown: Camo Bronze
Lamp: 1-7W LED MR16

Specialty Lights



BQ-08-FC

Finish Shown: Polished Chrome
Lamp: 1-7W LED MR16
* Special order item *



Enterprise

Finish Shown: Weathered Brass
Lamp: 2.5W LED G4
* Special order item *



SPJ43-02 Address Light

* Special order item *



12V LED Light Strip

- 1.8W / meter
- 2700K or 5000K
- Operates 8-16VAC
- 35,000 Hour Rating / 3 Year Warranty
- Dimmable with most magnetic transformers
- Max length for power feed is 12m (39' 4")
- Available in 82.25 ft reels or custom cut to specific lengths
- Accessories sold separately

Underwater Lights



Mini Beam

Finish Shown: Brass
Integrated 1.5W LED
6' Cord
1.5" x 1.25"



SL-40-AB

Finish Shown: Solid Brass
Lamp: 3W LED MR11



SL-33-AB

Finish Shown: Solid Brass
Lamp: 1-7W LED MR16



120V Bullet Lights by Moon Visions

Moon Visions has created the most user-friendly, superior quality, American-made series of lights...but still at a competitive price point. Their bullets are light-weight (the lightest on the market!) yet heavy-duty cast aluminum; they feature cast upshields with excellent seals, better balanced knuckle placement and the best powder coat available. Most of all, we are proud to say they are not only made in America...but better yet they are made in TEXAS! For more information on the Moon Visions line of products, please visit their website: www.moonvisionslighting.com



MVL-D 120V

Finishes: Green or Bronze

Lamp Options:

- LED MV120V R38 22W
- LED MS120 PAR38 18W
- LED ST PAR38 15W



MVM-D 120V

Finishes: Green or Bronze

Lamp Options:

- LED MV120V R30 14W
- LED MV120V R30 7W
- LED MS120V PAR30 14W
- LED ST PAR30 13W



MVS-D 120V

Finishes: Green or Bronze

Lamp Options:

- LED MV120V R20 5W
- LED MV120V R20 2.5W
- LED MS120V PAR20 10W
- LED ST PAR20 7W



MVL-U 120V

Finishes: Green, Bronze

Lamp Options:

- LED MV120V R38 22W
- LED MS120 PAR38 18W
- LED ST PAR38 15W



MVM-U 120V

Finishes: Green, Bronze

Lamp Options:

- LED MV120V R30 14W
- LED MV120V R30 7W
- LED MS120V PAR30 14W
- LED ST PAR30 13W



MVS-U 120V

Finishes: Green, Bronze

Lamp Options:

- LED MV120V R20 5W
- LED MV120V R20 2.5W
- LED MS120V PAR20 10W
- LED ST PAR20 7W

120V Floodlights



X17XFU35 Adjustable Flood

Finish: Bronze
 15W/25W/35W
 3000K/4000K/5000K
 5 Year Warranty
 100,000 Hr. Life



X17XFU60 Adjustable Flood

Finish: Bronze
 30W/50W/60W
 3000K/4000K/5000K
 5 Year Warranty
 100,000 Hr. Life



WAC 5022 120V Flood*

Finish Shown: Bronze
 3000K LED 50°x 80°
 Adjustable 2,4,8, 13 & 16W

120V Ingrounds



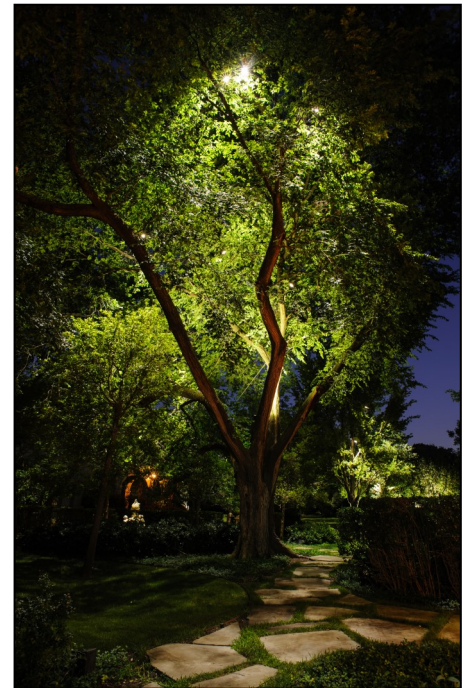
SL-20-MDG-NL 120V PAR30/PAR38

Finish: Bronze Composite
 Up to PAR38 lamp



WAC 5032-30BZ

Bronze Aluminum—3000K LED
 Adjustable beam angle 15° to 60°
 Integral dimmer 3W to 11.5W
 Drive over up to 4500lbs



This beautiful tree in Preston Hollow is illuminated with a combination of 14W up and downlights.

Transformers & Lighting Accessories



150SS~SL 150W 300SS~SL 300W

Unique 12-15V MultiTap Stainless Steel Transformer. Timer and Photocell (SNPC) Ready.



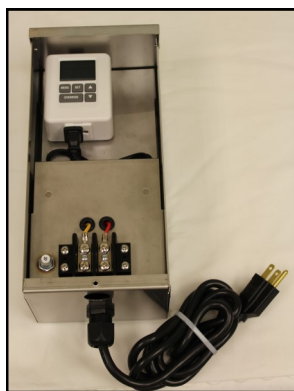
PX300, PX600, PX900

FX Luminaire's Stainless Steel Multi-Tap Transformer (11V-14V taps). With Manual, Timer, Photocell, or Timer/Photocell option.



ACME Transformers

Hardwire "Buck/Boost" Transformer available in 50,100, 150, 250, 500, or 750 watts.



MVX100W SS

Moon Visions 100W Stainless Steel Transformer with 12V Output; Use with TN111RM or LT112 Timer



TN111RM Timer

Removable, plug-in timer. Operates up to 2-on and 2-off systems per day.



2119 Photocell

Die cast zinc dusk-to-dawn Tork photocell. 2000W 120V with 1/2" conduit fitting for universal mounting.



Electronic Transformers

30W or 60W LED Transformer
.75" x 1.23" x 2.20"



TL-115 Photocell

120V 1200W Adjustable Photocell



Wire Nuts

Silicone-filled wire connectors. Necessary to protect splicing from moisture and oxidation. Need 2 connectors per fixture.

Lighting Accessories



LGS Stake

19" inground stake w/aluminum cap for 120V fixtures.



Stake Mount Options

S6 Telescoping Stake—Adjustable 2-14" Above Ground.

S7 10" Two-piece Ground Stake.

S8 15" Two-piece Ground Stake



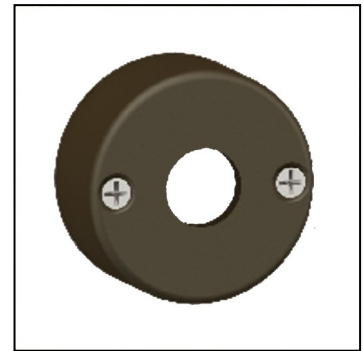
Green & Spread Lenses

Optional lenses for any Moon Visions LED fixture. Green lens simulates moonlight color & Spread lens gives an 80° light coverage. Use both for optimal moonlight effect.



TM Tree Mount

12V or 120V Tree Mount comes equipped with bolts, nuts, and back plate to make a dry connection. Available in Green (HG) or Bronze (BZ).



SM1

12V Mounting canopy that's great for arbors, walls, decks, etc. and just large enough to make a dry connection. Available in several colors.



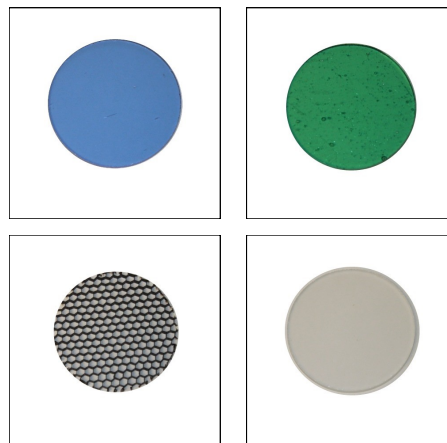
12V Wire

10-2 12V 10gauge 2 conductor

12-2 12V 12gauge 2 conductor

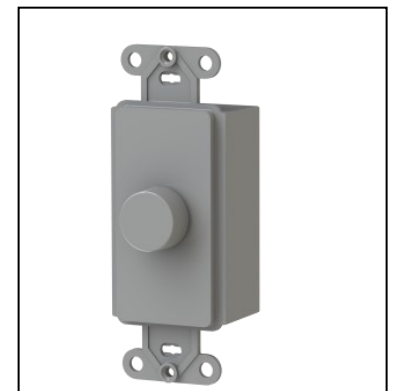
14-2 12V 14gauge 2 conductor

Available on 250ft. rolls



MR16 Lenses

Pale Blue, Pale Green, Honeycomb Louver, and Diffused Lens are just some of the many MR16 lenses we stock.



12VAC Dimmer

Max load = 120W
No minimum load required
Frequency (50Hz – 60Hz)

Good~Better~Best!

There are literally hundreds of low voltage LED lights on the market to choose from—all with various attributes and price points. We have cherry picked the ones we feel are the best quality for the best price from companies that stand behind their warranties.

~Good~



Eliteco MR16 bullet



Eliteco MR16 floodlight



Unique Proton pathlight

~Better~



Kichler MR16 bullet



Kichler T5 wedge floodlight



Eliteco G4 pathlight

~Best~



FX MR16 bullet



WAC Mini-floodlight



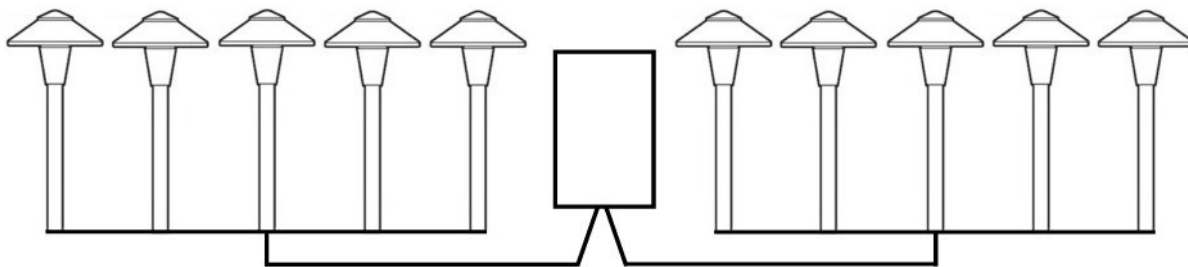
FX G4 pathlight

Low Voltage Rules for LED Lights

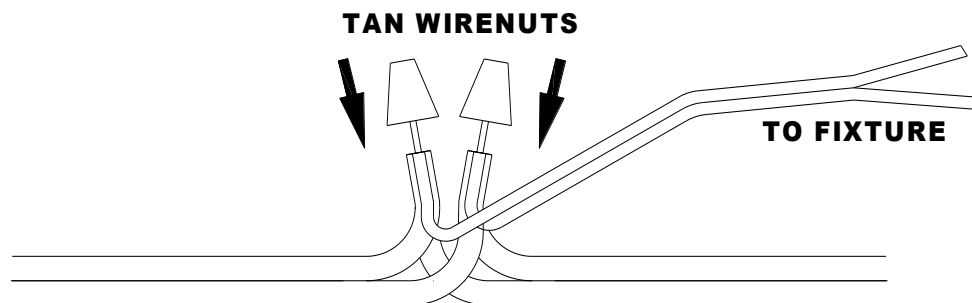
Because most LED's can operate at a wide range of voltages with NO CHANGE in light output or lamp life, the "rules" for installing and laying out a Low Voltage LED System are much more relaxed than with regular low voltage halogen. The wide range of 12V LED's that we keep in stock can operate anywhere from 9V to 14V without any change in the lamp's properties or characteristics.

By keeping the following "rules" in mind, you can keep the voltage even throughout your low voltage LED installation:

- Do not exceed 180 watts on one continuous run of #12-2 gauge wire.
- Do not fall below 9V or over 14V; although if you are using a multi-tap transformer, this should not be an issue.
- Use a center "T" wiring method for best results. Splice your wire into the middle fixture first, and then "T" off to the other fixtures to the right and the left.



- Make all connections at the fixtures using silicon filled Tan Wire Nuts, stripping back the insulation a minimum of 1 inch:



- Use Vaseline or lithium grease on all lamp terminals.
- Use Kleinhuis Cord grip (water-tight) connectors on all wires exiting the transformer.
- Record which lamps you used for each fixture, including their wattages, on a separate sheet and leave it in safe place to refer to when it's time for replacement.

What are the advantages of LED Lighting?

LONG LIFE: While it is believed that these products may last longer than 70,000 hours, they are conservatively rated for 50,000 hours. Burning 8 hours a night, these lamps can last for over 17 years!

LIGHT OUTPUT: The lumen output on our LED products are comparable to the output of high wattage halogen and mercury vapor lamps. So you get the same if not MORE light output at literally a fraction of the wattage!

EFFICIENCY: The upfront expense of the LED fixtures will pay for themselves in the first 3 years of their life because they use significantly less energy.

LITTLE TO NO VOLTAGE DROP: Because these lamps are just 5, 7, 14 or 22 watts each, the worry of a voltage drop is non-existent. You could run twenty lights on one single run to your transformer!

ENVIRONMENTALLY FRIENDLY: These lamps are mercury-free, lead-free, RoHS compliant, UV free, and IR free.

Advantages of 12V LEDs to YOU, the Installer:

- No underground conduit
- No permits required (exception in some areas—consult local building codes)
- No additional breakers/electrical components to install
- Cool White Color (5000K) simulates Moonlight
Warm White Color (3500K) substitutes for Halogen applications
- Low Voltage + 22 Watts = Less Heat with same Light Output!
- And best of all... because they operate anywhere from 8-14VAC, there is Little to No Voltage Drop consideration!

Cost Advantage of LEDs to YOU, the Homeowner:

LED ENERGY SAVINGS CALCULATOR:

$$\frac{\text{Old Watts} - \text{New Watts}}{1000} \times \text{Hours in Use} \times \text{Energy Rate} = \$ \text{ Savings}$$

So for example, replacing (8) 20 watt lights with (8) 5 watt LED lamps, burning 8 hours a night at \$.12/kwh (typical TXU rate):

$$.12 * 8 * .12 = \$.115 \text{ savings per day, which is } \$42 \text{ a year.}$$

This equates to a savings of **\$719** for the entire 50,000 hour life of the lamp!! Add that to your upfront savings of a 100 watt transformer versus a 300 watt (\$200), less wire for the entire system (\$50), and the replacement lamp costs you won't be needing (\$10 per 10,000 lamp for each fixture = \$400) and that is one heck of a savings!!

Designing with LED Lights

Can I replace one 100W MV with one LED light and have the same results?

Not exactly. A 100W MV light is 3000+ lumens with a 100° beam spread. For an LED light to compete in lumens, the beam spread must be reduced to anywhere from 25° to 80°; anything wider than that will result in much less measurable light on the ground. Therefore, to achieve the desired .1 fc on the ground from a moonlight downlight mounted 40' up in a tree, we recommend a ratio of about 3 LEDs to 2 MVs.

Consider the example below:



Shown with (4) 100W MV Downlights



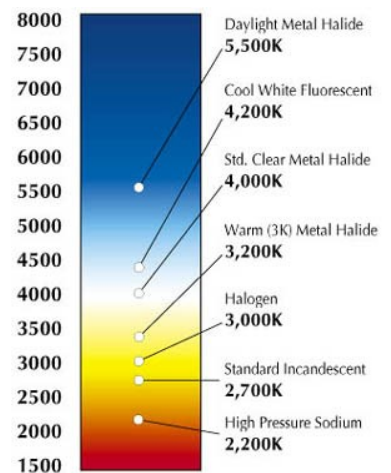
Shown with (7) 14W LED Downlights

These pictures were taken of a house with downlights mounted 40' high in mature red oak trees. You can see the difference in spread between the two scenarios. The Mercury Vapor scene on the left illuminates the roof of the house as well as the entire yard with just four fixtures. The LED scene on the right still has amazing light coverage on the ground, yet the spill-over light on the roof is gone. The electricity consumed on this property went from 400 watts (with the MV lights) to 105 watts (with the LEDs). That is a 75% drop in consumption!

LED Lights: Warm White vs. Cool White

Typically Cool White (5000K) LEDs are used to illuminate in the landscape on trees, bushes, etc. The eye is used to seeing the cool moonlight hues coming through the trees at night, creating a very natural and serene setting. Cool White light enhances the color of foliage, making trees and vegetation look even greener and healthier. FYI—our new optional green Mercury Vapor lens makes the LED an even cooler 5500K.

Use Warm White (3500K) LEDs to light the house, fence, or other structures such as gazebos, arbors, or fountains. Warm White light brings out the texture of a surface and creates crisp and inviting light in seating or dining areas. The Kelvin Temperature chart to the left shows the various colors of light and where each light source is represented on the spectrum.



Examples of How to Install Moon Visions' 12V LEDs

Moon Visions' 12V LEDs are the only ones like it on the market. It's never been feasible to illuminate 30+ foot tall trees in this way with LOW VOLTAGE! In the past you would have to use a multitude of fixtures to give you the punch and spread that one LED 12V light can do. And with the variety of sizes and wattages available in the Moon Visions 12V LED family of bullets...anything is possible.

Install transformer at central location and wire as any other 12v installation

- Low watts = smaller transformer = big \$ savings!
- Make connections using direct burial silicone wire nuts—no bulky boxes!

-OR-

Install 120VAC in conduit to each tree

- Add a 75 watt electronic transformer in standard junction box at the base of tree and run up with 12V wire.
- Use “buck/boost” transformer (100, 150, 250, 500 or 750 watts) at base of tree and run up with 12V wire.

Bonus: Because you are only adding minimal wattage with LEDs, it's often easy to tie into an existing low voltage system. And if you are planning a job with large trees AND other low voltage lights (path lights, underwater lights, etc.), you can tie them all in together on ONE transformer.



This gorgeous Tennessee residence is illuminated with the Moon Visions 12V LED bullet series. The large trees have several MVL-D 22W R38s (pg. 3) mounted over 60 ft. high, giving the soft shadows of moonlight on the ground. The tree in the foreground is illuminated using a MVM-U 7W R30 uplight (pg 3).



Terms & Conditions of Sales

- Freight charges are not included on any shipments and are determined at the time of shipment processing.
- All discrepancies must be addressed no later than 10 days after delivery.
- If UPS /FedEx shipment is received damaged, report damage to us at once and hold original carton and merchandise for inspection.
- Returns will be fully refunded IF AND ONLY IF material has not been installed AND is in its original packaging – this does not apply to defective material returns.
- All fixtures have a 3 year warranty.
- All Moon Visions LED Lamps have a 3 year warranty from the date printed on the lamp. Please note that Moon Visions only warranties their LED Lamp in a Moon Visions fixture. No exceptions.
- Transformers have a 10-year warranty.
- Unique's Multi-Matic transformers & fixtures have a lifetime warranty.
- FX Luminaire warranties their fixtures working on an FX transformer for 10 years. However, they VOID all warranties if their fixtures are running on a Multi-matic (Unique) transformer.
- There is no warranty on light bulbs. Lamps are rated by hours according to the manufacturer, but does not guarantee a specific lamp life.
- Special order items (items not in our regular inventory) to be returned will incur a 50% restocking fee. Transportation charges must be prepaid by customer.

2024 - Landscape Lighting Supply

All rights reserved. Certain products illustrated in this catalog may be protected by applicable patents and patent pending. We reserve the right to change details of design, materials, and finishes in any way that will not alter installed appearance or reduce function and performance.



Landscape Lighting Supply
780 S. Floyd Rd.
Richardson, TX 75080
1-800-238-0346
www.landscapelight.com