

# Landscape Lighting Supply Company



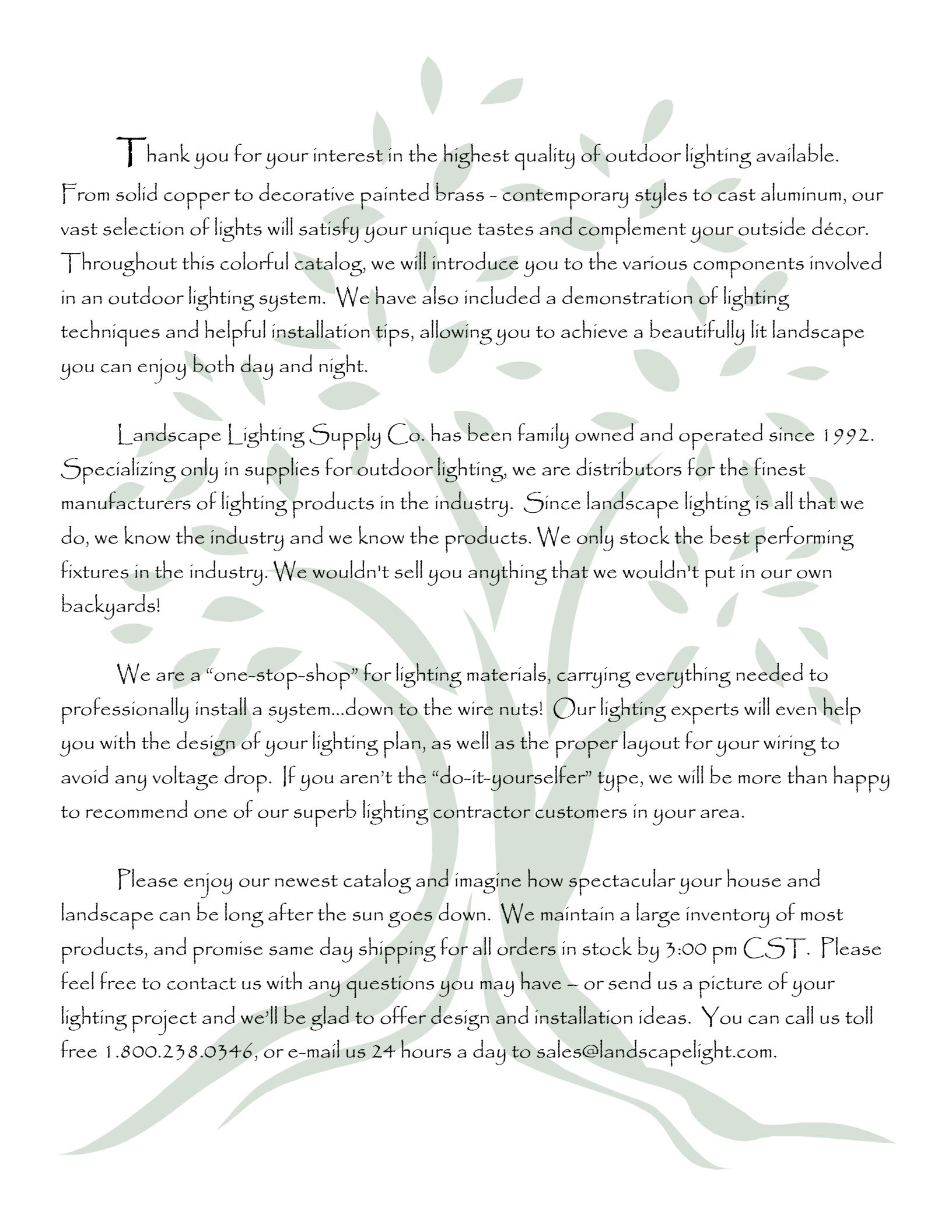
*Celebrating our 33rd year as **THE**  
“one stop shop” for high-end outdoor lighting!*

780 S. Floyd Rd.  
Richardson, TX 75080  
972.480.9700  
[www.landscapelight.com](http://www.landscapelight.com)



Proud distributors of **Moon Visions Lighting**

~Born and Bred in TEXAS!~



Thank you for your interest in the highest quality of outdoor lighting available. From solid copper to decorative painted brass - contemporary styles to cast aluminum, our vast selection of lights will satisfy your unique tastes and complement your outside décor. Throughout this colorful catalog, we will introduce you to the various components involved in an outdoor lighting system. We have also included a demonstration of lighting techniques and helpful installation tips, allowing you to achieve a beautifully lit landscape you can enjoy both day and night.

Landscape Lighting Supply Co. has been family owned and operated since 1992. Specializing only in supplies for outdoor lighting, we are distributors for the finest manufacturers of lighting products in the industry. Since landscape lighting is all that we do, we know the industry and we know the products. We only stock the best performing fixtures in the industry. We wouldn't sell you anything that we wouldn't put in our own backyards!

We are a "one-stop-shop" for lighting materials, carrying everything needed to professionally install a system...down to the wire nuts! Our lighting experts will even help you with the design of your lighting plan, as well as the proper layout for your wiring to avoid any voltage drop. If you aren't the "do-it-yourselfer" type, we will be more than happy to recommend one of our superb lighting contractor customers in your area.

Please enjoy our newest catalog and imagine how spectacular your house and landscape can be long after the sun goes down. We maintain a large inventory of most products, and promise same day shipping for all orders in stock by 3:00 pm CST. Please feel free to contact us with any questions you may have - or send us a picture of your lighting project and we'll be glad to offer design and installation ideas. You can call us toll free 1.800.238.0346, or e-mail us 24 hours a day to [sales@landscapelight.com](mailto:sales@landscapelight.com).

# Table of Contents

- Moon Visions 120V & 12V LEDs \_\_\_\_\_ 2~3
- Replacement 120V & 12V LEDs \_\_\_\_\_ 4~5
- FX Luminaire LED Lights \_\_\_\_\_ 6
- RGB Color~Changing & Smart Control Options \_\_\_\_\_ 7
- Low Voltage Bullets & Floods \_\_\_\_\_ 8~9
- Low Voltage Path Lights \_\_\_\_\_ 10~11
- Low Voltage Step & Deck Lights \_\_\_\_\_ 12~13
- Low Voltage Recessed Lights & Ingrounds \_\_\_\_\_ 14
- Specialty Lights \_\_\_\_\_ 15
- Line Voltage Bullets, Floodlights & Ingrounds \_\_\_\_\_ 16~17
- Transformers & Lighting Accessories \_\_\_\_\_ 18~19
- Design & Installation Guide \_\_\_\_\_ 20~24
- Terms & Conditions of Sales \_\_\_\_\_ 25



# 120V LED Bullet Lights by Moon Visions



## LED MV 120V R38

22W PAR38 E26

50,000 Hour Rated Life

Lumens: 1900/1700

5000K = 25°, 40°, 50°, 80°

3500K = 40°, 80°



## MVL~D 120V

LED R38 Downlight Includes:

BR40-120V bullet

DSA10 glare shield

TM tree mount with installation

hardware



## MVL~U 120V

LED R38 Uplight Includes:

BR40-120V bullet

USR40 cast upshield

Note: mount not included



## LED MV 120V R30

14W & 7W PAR30 E26

50,000 Hour Rated Life

14W Lumens: 1400/1300

7W Lumens: 655/600

5000K = 25°, 40°, 50°, 80°

3500K = \*15°, \*30°, 40°, 80°

\*14W only



## MVM-D 120V

LED R30 Downlight Includes:

BR30-120V bullet

DSA8 glare shield

TM tree mount with installation

hardware



## MVM-U 120V

LED R30 Uplight Includes:

BR30-120V bullet

USR30 cast upshield

Note: mount not included



## LED MV 120V R20

2.5W & 5W PAR20 E26

50,000 Hour Rated Life

5W Lumens: 440/388

5000K = \*25°, 40°, \*50°, 80°

3500K = \*15°, \*30°, 40°, 80°

\*available in 5W only



## MVS-D 120V

LED R20 Downlight Includes:

BR20-120V bullet

DSA6 glare shield

TM tree mount with installation

hardware



## MVS-U 120V

LED R20 Uplight Includes:

BR20-120V bullet

USR20 cast upshield

Note: mount not included



# 12V LED Bullet Lights by Moon Visions



## LED MV 12V R38

22W PAR38 GU24  
50,000 Hour Rated Life  
Lumens: 1900/1700

5000K= 25°, 40°, 50°, 80°  
3500K = 40°, 80°



## MVL-D GU24

LED R38 Downlight Includes:  
BR40-12V bullet  
DSA10 glare shield  
TM tree mount with installation  
hardware



## MVL-U GU24

LED R38 Uplight Includes:  
BR40-12V bullet  
USR40 cast upshield  
  
Note: mount not included



## LED MV 12V R30

14W & 7W PAR30 GU24  
50,000 Hour Rated Life  
14W Lumens: 1400/1300  
7W Lumens: 655/600

5000K= 25°, 40°, 50°, 80°  
3500K = \*15°, \*30°, 40°, 80°  
\*14W only



## MVM-D GU24

LED R30 Downlight Includes:  
BR30-12V bullet  
DSA8 glare shield  
TM tree mount with installation  
hardware



## MVM-U GU24

LED R30 Uplight Includes:  
BR30-12V bullet  
USR30 cast upshield  
  
Note: mount not included



## LED MV 12V R20

2.5W & 5W PAR20 GU24  
50,000 Hour Rated Life  
5W Lumens: 440/388

5000K= \*25°, 40°, \*50°, 80°  
3500K = \*15°, \*30°, 40°, 80°  
\*available in 5W only



## MVS-D GU24

LED R20 Downlight Includes:  
BR20-12V bullet  
DSA6 glare shield  
TM tree mount with installation  
hardware



## MVS-U GU24

LED R20 Uplight Includes:  
BR20-12V bullet  
USR20 cast upshield  
  
Note: mount not included

## 120V LED PAR Replacement Lamps



**LED MV 120V 22W R38**  
 Warm White (3500K) and Cool  
 White (5000K)  
 50,000 Hour Rated Life  
 For use in MVL-U or MVL-D  
 Lumens: 1700/1900



**LED MV 120V 14W R30**  
 Warm White (3500K) and Cool  
 White (5000K)  
 50,000 Hour Rated Life  
 For use in MVM-U or MVM-D  
 Lumens: 1300/1400



**LED MV 120V 5W R20**  
 Warm White (3500K) and Cool  
 White (5000K)  
 50,000 Hour Rated Life  
 For use in MVS-U or MVS-D  
 Lumens: 388/440



**LED MS 18W PAR38**  
 Cool White (6000K)  
 36° Beam Spread  
 30,000 Hour Rated Life  
 For use in MVL-U or MVL-D  
 Lumens: 1400



**LED MS 14W PAR30**  
 Cool White (6000K)  
 60° Beam Spread  
 30,000 Hour Rated Life  
 For use in MVM-U or MVM-D  
 Lumens: 900



**LED MS 10W PAR20**  
 Cool White (6000K)  
 36° Beam Spread  
 30,000 Hour Rated Life  
 For use in MVS-U or MVS-D  
 Lumens: 850



**LED ST 15W PAR38**  
 2700K, 3000K, 3500K  
 4000K & 5000K  
 40° Beam Spread  
 25,000 Hour Rated Life  
 For use in MVL-U or MVL-D  
 Lumens: 1200 (5K)



**LED ST 13W PAR30**  
 2700K, 3000K, 3500K  
 4000K & 5000K  
 40° Beam Spread  
 25,000 Hour Rated Life  
 For use in MVM-U or MVM-D  
 Lumens: 1000 (5K)



**LED ST 7W PAR20**  
 2700K, 3000K, 3500K  
 4000K & 5000K  
 40° Beam Spread  
 25,000 Hour Rated Life  
 For use in MVS-U or MVS-D  
 Lumens: 525 (5K)

All 120V LED PAR Replacement lamps have 3 Year Limited Warranty

## 12V LED Lights & Replacement LED Lamps



### LED EA MR16

1W 85-130 lm  
 3 W 220-330 lm  
 5W 450-500 lm  
 7W 540-640 lm  
 2700K, 3000K, 5700K  
 Limited Lifetime Warranty



### LED EA MR11

1.5W 135 lm  
 3W 270 lm  
 2700K, 3000K, 5700K  
 Limited Lifetime Warranty



### LED BL AR11 2W

Lumens: 120  
 2700K & 5700K  
 Equivalent to 20watt halogen  
 lamps; Replaces a GBF lamp  
 50,000 Hours/5 Year Warranty



### LED EA G4

1.5W 2700K 150 lm  
 2.5W 2700K 250 lm  
 Limited Lifetime Warranty



### LED EA BAY

2W 2700K 200 lm  
 4W 2700K 400 lm  
 Limited Lifetime Warranty



### LED EA MR8

2W 2700K 150 lm  
 Limited Lifetime Warranty



### ECOSTAR LED BL MR16

4 watts (Lumens: 265/300)  
 2700K & 3000K in 30° & 60°  
 Rated Life: 30,000 Hours  
 3 Year warranty



### LED EA S8

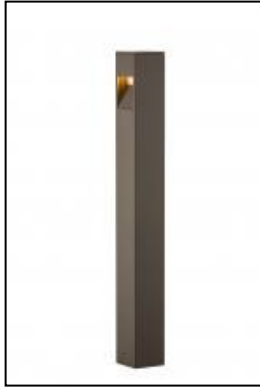
4W 2700K 400 lm  
 Wedge replacement for  
 #3155 & #3156 lamps  
 Limited Lifetime Warranty



### LED EA T5

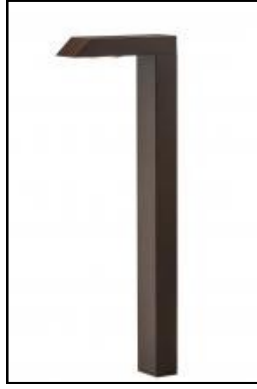
2.5W 2700K 250 lm  
 Wedge replacement for T5 lamps  
 Limited Lifetime Warranty

## 12V LED Lights by FX Luminaire



### M-PZ~3LED Pathlight\*

Finish Shown: Black  
Integrated 4W LED  
Height: 22"



### M-PL~1LED Pathlight\*

Finish Shown: Bronze  
Integrated 2.5W LED  
Height: 22"



### FC-GW~1LED

Finish Shown: Bronze  
Integrated 2W LED  
90, 180, 270 or 360°



### PB-3LED-BZ\*

Finish Shown: Bronze  
4.5W LED Floodlight; Comes with stake mount and 3 color corrective lenses for warm white, cool white and neutral white.



### LC-9LED-BZ\*

Finish Shown: Bronze  
13W LED Floodlight; Comes with stake mount and 3 color corrective lenses for warm white, cool white and neutral white.



### CW-31\*

Finish Shown: Antique Brass  
G4 LED Uplight;  
Also available in larger MR16 size



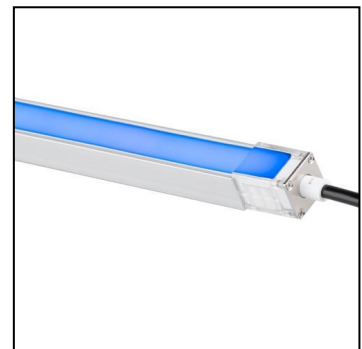
### PL~SB Pathlight\*

Finish Shown: Sedona Brown  
Lamp: 1.6W 2700K (Incl)  
Height: 15"



### TM-BZ Pathlight\*

Finish Shown: Bronze  
Lamp: 1.6W 2700K (Incl)  
Height: 15"



### SRP Strip Lights

Available in RGBW & White  
Sold in 10' increments  
Max 20' for RGBW  
Accessories sold separately

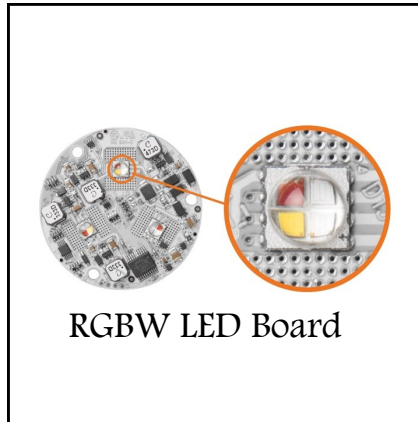
\*Includes ground mounting stake.

# RGB Color-Changing Options & Smart Controls



## Luxor Zoning Dimming System

- The Luxor ZDC control system combines all the features of a Luxor ZD plus the ability to control up to 30,000 colors using RGBW technology. For unique looks throughout the year, adjust color temperatures to complement vegetation and architecture. RGBW technology provides elegant colors for spectacular effects.
- Luxor ZD and Luxor ZDC controllers are the brains of the Luxor lighting control system. The controllers communicate with the integrated fixtures via the two-wire path.
- FX integrated fixtures come standard with zoning capabilities. Optional dimming and color control are also available for maximum design flexibility.
- Optional wireless control with the Luxor app makes system design and control simple and convenient. Luxor controllers can be wirelessly connected with the WIFI-MOD or hardwired using the LAN-MOD.



## Brilliance Smart Socket

- Plugs into any transformer
- Uses Wi-Fi controlled with Brilliance Smart app
- Provides remote control of your entire lighting system from anywhere in the world



## VIVID MR16

- Drop in lamp can be used in any MR16 fixture
- 5W 40° Fixed 3000K with RGB color mixing LED diodes
- Dimmable with most magnetic transformers
- 25,000 hour/ 5 year warranty
- Bluetooth, app controlled



## Brilliance MR16

- Drop in lamp can be used in any MR16 fixture
- 6W 38° 2200K-5700K and RGB color wheel
- Astronomical timer & schedule timer
- 50,000 hour/ 5 year warranty
- Wi-Fi, app controlled

## 12V Bullets & Floods



### MVS-D MR16

Finish Shown: Green  
Lamp: 1W-7W LED MR16



### MVS-U MR16

Finish Shown: Bronze  
Lamp: 1W-7W LED MR16



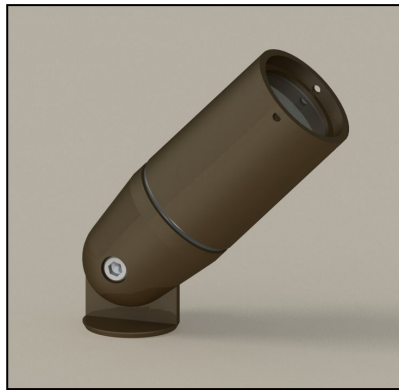
### RS Bullet\*

Finish Shown: Bronze  
Lamp: 1W-7W LED MR16



### 15517 MR16 Bullet\*

Finish Shown: Brass  
Lamp: 1W-7W LED MR16



### HL300 BZ

Finish Shown: Bronze  
Lamp: 1.5-3W LED MR8



### HL360

Finish Shown: Bronze  
Lamp: 1W-7W LED MR16



### 15484 MR11 Bullet\*

Finish Shown: Weathered Brass  
Lamp: 3W LED MR11



### MP-20\*

Finish Shown: Bronze  
Lamp: 3W LED MR11



### MVM-DT

Finish Shown: Green  
Lamp: LED PAR36 or AR111  
\*shown with optional louver\*

\*Includes ground mounting stake.

## 12V Bullets & Floods



**WAC 5011 Bullet\***  
Finish Shown: Bronze  
3000K LED 10-60°  
Adjustable 2,4,8, 13 & 16W



**WAC 5021 Flood\***  
Finish Shown: Bronze  
3000K LED 50°x 80°  
Adjustable 2,4,8, 13 & 16W



**WAC 5031 Inground**  
Finish Shown: Bronze  
3000K LED 15-60°  
Adjustable 2,4,7,10 & 12W  
Tilt and Aim -20° to +20°



**RL~20 Flood\***  
Finish Shown: Solid Copper  
Lamp: LED G4



**WAC 5111 Mini-Bullet\***  
Finish Shown: Bronze  
3000K LED 10°-50°  
Adjustable 1,2,4, 6 & 7W



**WAC 5121 Mini-Flood\***  
Finish Shown: Bronze  
2700K/3000K LED 50°x 80°  
Adjustable 1,2,4,6 & 8W



**\*Includes ground mounting stake.**

## 12V Path Lights



**6011-30BZ\***

Finish Shown: Bronze  
Integrated 5.8W 3000K  
Height: 22"



**6091-30BZ\***

Finish Shown: Bronze  
Integrated 3W 3000K  
Height: 23"



**6061-27BZ \***

Finish Shown: Bronze  
Integrated 6.5W 2700K  
Height: 23.5"



**SC-LED20-12R\***

Finish Shown: Solid Copper  
Lamp: 1.6W 2700K (Incl)  
Height: 15"



**DL-LED20-12R\***

Finish Shown: Solid Copper  
Lamp: 1.6W 2700K (Incl)  
Height: 15.75" (12R) 21.75" (18R)



**CA-LED20-12R\***

Finish Shown: Solid Copper  
Lamp: 1.6W 2700K (Incl)  
Height: 15"



**TD12\***

Finish Shown: Solid Copper  
Lamp: #93 13W (Incl)  
Height: 18"



**SP-LED20-12R\***

Finish Shown: Solid Copper  
Lamp: 1.6W 2700K (Incl)  
Height: 15"



**15478 CBR**

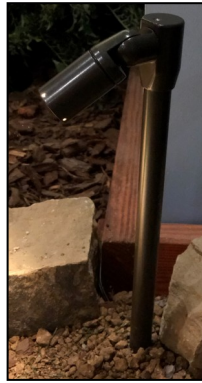
Finish Shown: Centennial Brass  
Lamp: LED G4 not included  
Height: 21"

**\*Includes ground mounting stake.**

## 12V Path Lights



**6401~30BZ\***  
 Finish Shown: Bronze  
 Integrated 6W 3000K  
 7.25" x 2.25"



**MR8 Pathlight\***  
 Finish Shown: Bronze  
 Lamp: 1.5W LED MR8  
 12" Bronze riser w/ stake



**15014\***  
 Finish Shown: Bronze  
 Integrated 4W 2700K LED  
 Height: 15"



**6021~30BZ\***  
 Finish Shown: Bronze  
 Integrated 2.9W LED  
 Height: 23.5"



**16012\***  
 Finish Shown: Matte Bronze  
 Lamp: 1.5W G4 LED  
 Height: 21.5"



**16010\***  
 Finish Shown: Matte Bronze  
 Lamp: 1.5W G4 LED  
 Height: 15.5"



**SP-A\***  
 Finish Shown: Flat Black  
 Lamp: 1.6W 2700K (Incl)  
 Height: 15"



**PR-4704\***  
 Finish Shown: Bronze  
 Lamp: LED G4  
 Height: 15.75"



**PM-20\***  
 Finish Shown: Flat Black  
 Lamp: LED MR16  
 Height: 14"

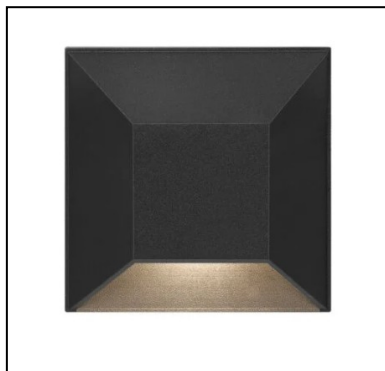
**\*Includes ground mounting stake.**

## 12V Surface Mounted Step & Deck Lights



### 16805 MZ

Finish Shown: Matte Brass  
Integrated 2W 2700K LED



### 15222 BK

Finish Shown: Black  
Integrated 2W 2700K LED



### QL~1LED~BZ

Finish Shown: Bronze  
Integrated 2W 2700K LED



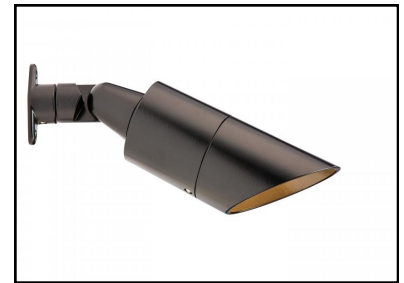
### RC~3LED Eave Light

Finish Shown: White  
Integrated LED  
Available in RGB



### MM~LED20W

Finish Shown: Bronze  
Lamp: 1.6W LED G4



### MD~NL~BZ

Finish Shown: Bronze  
Lamp: LED MR16



### 15228 BZ

Finish Shown: Bronze  
Integrated 2.5W 2700K LED



### 4501-30BK

Finish Shown: Black  
Integrated 4W 3000K LED  
No back box needed



### 4901-30BZ

Finish Shown: Bronze  
8W Integrated LED 3000K  
No back box needed

## 12V Surface Mounted Step & Deck Lights



**NL-3LED-DN-CR-CU**  
Finish Shown: Solid Copper  
Lamp: 4W Integrated



**3021-30BZ**  
Finish Shown: Matte Bronze  
Integrated LED 2.8W 3000K



**LE-1LED-CU**  
Finish Shown: Solid Copper  
Lamp: 2W Integrated



**HL-340-2X**  
Finish Shown: Bronze  
Lamp: (2) LED MR16s



**12V Bistro Lights**  
24' Strands, 2' spacing  
2W S14 LED lamps included  
Wet location rated



**LF-1LED**  
Finish Shown: Bronze  
Lamp: 2W Integrated LED



**Orion**  
Finish Shown: Weathered Brass  
Lamp: 2W LED G4



**Guadalupe**  
Finish Shown: Black  
Lamp: 3.8W Integrated LED



**3031-30BZ**  
Finish Shown: Bronze  
2.8W Integrated LED 3000K

## Recessed Step & Deck Lights



### WAC 4011 BZ

Finish Shown: Bronze  
Integrated 2W 2700K LED  
Fits in 2x4 junction box



### RH-3LED-W-BZ

Finish Shown: Bronze  
Integrated 4W 2700K LED  
Fits in 2x4 junction box



### HS-2LED-W-BZ

Finish Shown: Bronze  
Integrated 3.5W 2700K LED



### LM-LED40W

Finish Shown: Solid Copper  
Lamps: (2) LED G4 2700K  
Also available in bronze



### CP-LED20W

Finish Shown: Solid Copper  
Lamp: LED G4 2700K  
Also available in bronze



### FX MO-3LED-BZ

Finish Shown: Bronze  
Integrated 4.5W LED

## 12V Inground Lights



### 15495 CBR

Finish Shown: Bronze  
Lamp: 1-7W LED MR16



### RP-NL-LV-CB

Finish Shown: Camo Bronze  
Lamp: 1-7W LED MR16



### FC-NL-CW-CB

Finish Shown: Camo Bronze  
Lamp: 1-7W LED MR16

## Specialty Lights



### BQ~1LED~SS

Finish: Stainless Steel  
Lamp: 2W Integrated LED  
\* Special order item \*



### WAC Recessed Rounds

Finish Shown: Stainless Steel  
2700K or 3000K  
1" or 2" sizes with various tops  
\*Special order item\*



### SPJ43-02 Address Light

\* Special order item \*



### 12V LED Light Strip

- 1.8W / meter
- 2700K or 5000K
- Operates 8-16VAC
- 35,000 Hour Rating / 3 Year Warranty
- Dimmable with most magnetic transformers
- Max length for power feed is 12m (39' 4")
- Available in 82.25 ft reels or custom cut to specific lengths
- Accessories sold separately

## Underwater Lights



### Mini Beam

Finish Shown: Brass  
Integrated 1.5W LED  
6' Cord  
1.5" x 1.25"



### LP~ZD3LED~HZ~30'~BS

Finish Shown: Solid Brass  
Lamp: 4.5W Integrated LED  
30' cord



### SL~33~AB

Finish Shown: Solid Brass  
Lamp: 1-7W LED MR16



## 120V Bullet Lights by Moon Visions

Moon Visions has created the most user-friendly, superior quality, American-made series of lights...but still at a competitive price point. Their bullets are light-weight (the lightest on the market!) yet heavy-duty cast aluminum; they feature cast upshields with excellent seals, better balanced knuckle placement and the best powder coat available. Most of all, we are proud to say they are not only made in America...but better yet they are made in TEXAS! For more information on the Moon Visions line of products, please visit their website: [www.moonvisionslighting.com](http://www.moonvisionslighting.com)



### MVL-D 120V

Finishes: Green or Bronze

Lamp Options:

- LED MV120V R38 22W
- LED MS120 PAR38 18W
- LED ST PAR38 15W



### MVM-D 120V

Finishes: Green or Bronze

Lamp Options:

- LED MV120V R30 14W
- LED MV120V R30 7W
- LED MS120V PAR30 14W
- LED ST PAR30 13W



### MVS-D 120V

Finishes: Green or Bronze

Lamp Options:

- LED MV120V R20 5W
- LED MV120V R20 2.5W
- LED MS120V PAR20 10W
- LED ST PAR20 7W



### MVL-U 120V

Finishes: Green, Bronze

Lamp Options:

- LED MV120V R38 22W
- LED MS120 PAR38 18W
- LED ST PAR38 15W



### MVM-U 120V

Finishes: Green, Bronze

Lamp Options:

- LED MV120V R30 14W
- LED MV120V R30 7W
- LED MS120V PAR30 14W
- LED ST PAR30 13W



### MVS-U 120V

Finishes: Green, Bronze

Lamp Options:

- LED MV120V R20 5W
- LED MV120V R20 2.5W
- LED MS120V PAR20 10W
- LED ST PAR20 7W

## 120V Floodlights



### X17XFU35 Adjustable Flood

Finish: Bronze  
 15W/25W/35W  
 3000K/4000K/5000K  
 5 Year Warranty  
 100,000 Hr. Life



### X17XFU60 Adjustable Flood

Finish: Bronze  
 30W/50W/60W  
 3000K/4000K/5000K  
 5 Year Warranty  
 100,000 Hr. Life



### WAC 5022 120V Flood\*

Finish Shown: Bronze  
 3000K LED 50°x 80°  
 Adjustable 2,4,8, 13 & 16W

## 120V Ingrounds



### SL-20-MDG-NL 120V PAR30/PAR38

Finish: Bronze Composite  
 Up to PAR38 lamp

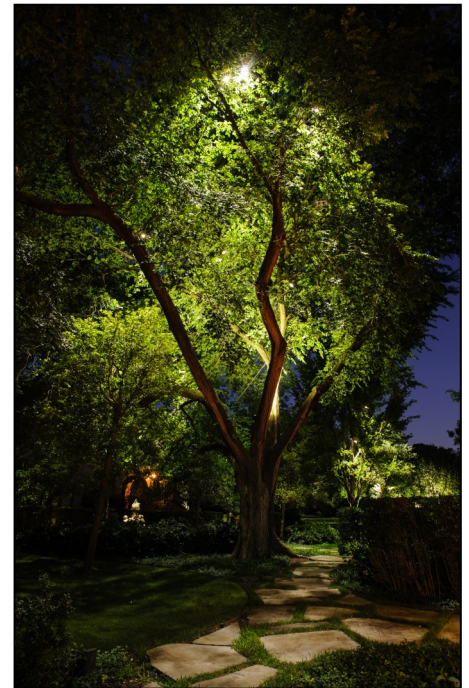


SL-20-MDG



### WAC 5032-30BZ

Bronze Aluminum—3000K LED  
 Adjustable beam angle 15° to 60°  
 Integral dimmer 3W to 11.5W  
 Drive over up to 4500lbs



*This beautiful tree in Preston Hollow is illuminated with a combination of 14W up and downlights.*

## Transformers & Lighting Accessories



### 150SS~SL 150W 300SS~SL 300W

Unique 12-15V MultiTap Stainless Steel Transformer. Timer and Photocell (SNPC) Ready.



### PX300, PX600, PX900

FX Luminaire's Stainless Steel Multi-Tap Transformer (11V-14V taps). With Manual, Timer, Photocell, or Timer/Photocell option.



### ACME Transformers

Hardwire "Buck/Boost" Transformer available in 50,100, 150, 250, 500, or 750 watts.



### MVX100W SS

Moon Visions 100W Stainless Steel Transformer with 12V Output; Use with TN111RM or LT112 Timer



### TN111RM Timer

Removable, plug-in timer. Operates up to 2-on and 2-off systems per day.



### 2119 Photocell

Die cast zinc dusk-to-dawn Tork photocell. 2000W 120V with 1/2" conduit fitting for universal mounting.



### Electronic Transformers

30W or 60W LED Transformer  
.75" x 1.23" x 2.20"



### TL-115 Photocell

120V 1200W Adjustable Photocell



### Wire Nuts

Silicone-filled wire connectors. Necessary to protect splicing from moisture and oxidation. Need 2 connectors per fixture.

## Lighting Accessories



### LGS Stake

19" inground stake w/aluminum cap for 120V fixtures.



### Stake Mount Options

**S6** Telescoping Stake—Adjustable 2-14" Above Ground.

**S7** 10" Two-piece Ground Stake.

**S8** 15" Two-piece Ground Stake



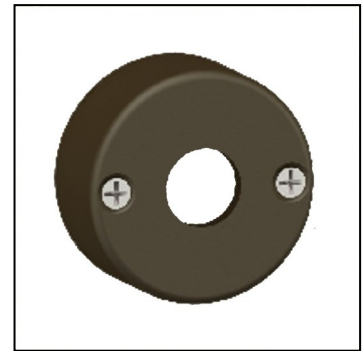
### Green & Spread Lenses

Optional lenses for any Moon Visions LED fixture. Green lens simulates moonlight color & Spread lens gives an 80° light coverage. Use both for optimal moonlight effect.



### TM Tree Mount

12V or 120V Tree Mount comes equipped with bolts, nuts, and back plate to make a dry connection. Available in Green (HG) or Bronze (BZ).



### SM1

12V Mounting canopy that's great for arbors, walls, decks, etc. and just large enough to make a dry connection. Available in several colors.



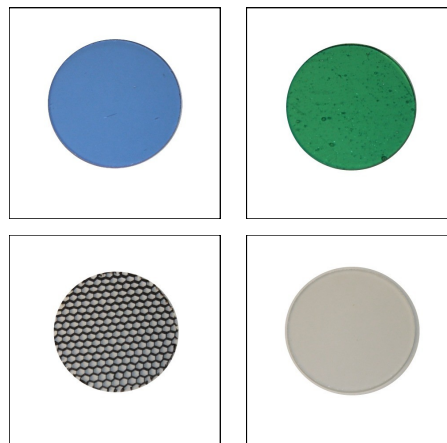
### 12V Wire

**10-2** 12V 10gauge 2 conductor

**12-2** 12V 12gauge 2 conductor

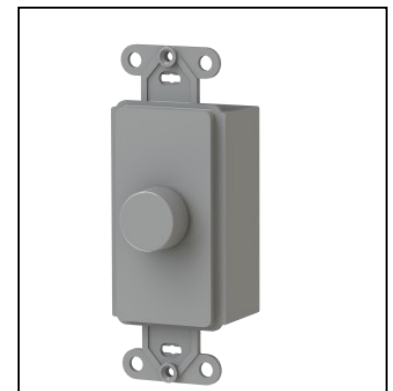
**14-2** 12V 14gauge 2 conductor

\*Available on 250ft. rolls\*



### MR16 Lenses

Pale Blue, Pale Green, Honeycomb Louver, and Diffused Lens are just some of the many MR16 lenses we stock.



### 12VAC Dimmer

Max load = 120W  
No minimum load required  
Frequency (50Hz – 60Hz)

## Good~Better~Best!

There are literally hundreds of low voltage LED lights on the market to choose from—all with various attributes and price points. We have cherry picked the ones we feel are the best quality for the best price from companies that stand behind their warranties.

### ~Good~



Eliteco MR16 bullet



Eliteco MR16 floodlight



Unique Proton pathlight

### ~Better~



Kichler MR16 bullet



Kichler T5 wedge floodlight



Eliteco G4 pathlight

### ~Best~



FX MR16 bullet



WAC Mini-floodlight



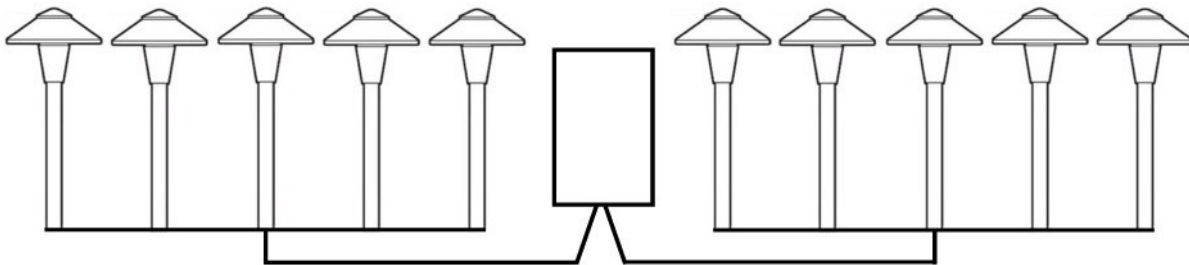
FX G4 pathlight

## Low Voltage Rules for LED Lights

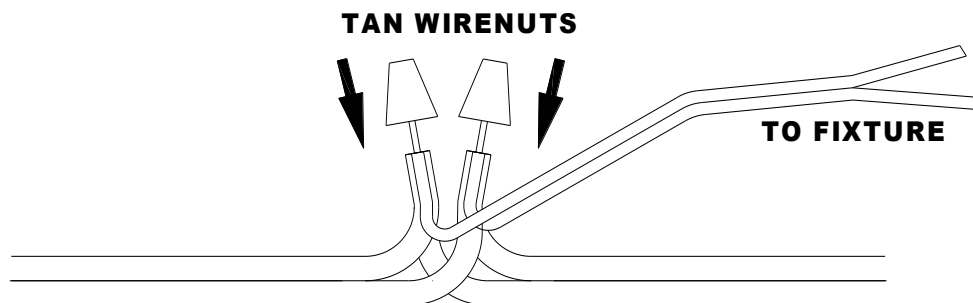
Because most LED's can operate at a wide range of voltages with NO CHANGE in light output or lamp life, the "rules" for installing and laying out a Low Voltage LED System are much more relaxed than with regular low voltage halogen. The wide range of 12V LED's that we keep in stock can operate anywhere from 9V to 14V without any change in the lamp's properties or characteristics.

By keeping the following "rules" in mind, you can keep the voltage even throughout your low voltage LED installation:

- Do not exceed 180 watts on one continuous run of #12-2 gauge wire.
- Do not fall below 9V or over 14V; although if you are using a multi-tap transformer, this should not be an issue.
- Use a center "T" wiring method for best results. Splice your wire into the middle fixture first, and then "T" off to the other fixtures to the right and the left.



- Make all connections at the fixtures using silicon filled Tan Wire Nuts, stripping back the insulation a minimum of 1 inch:



- Use Vaseline or lithium grease on all lamp terminals.
- Use Kleinhuis Cord grip (water-tight) connectors on all wires exiting the transformer.
- Record which lamps you used for each fixture, including their wattages, on a separate sheet and leave it in safe place to refer to when it's time for replacement.

## What are the advantages of LED Lighting?

**LONG LIFE:** While it is believed that these products may last longer than 70,000 hours, they are conservatively rated for 50,000 hours. Burning 8 hours a night, these lamps can last for over 17 years!

**LIGHT OUTPUT:** The lumen output on our LED products are comparable to the output of high wattage halogen and mercury vapor lamps. So you get the same if not MORE light output at literally a fraction of the wattage!

**EFFICIENCY:** The upfront expense of the LED fixtures will pay for themselves in the first 3 years of their life because they use significantly less energy.

**LITTLE TO NO VOLTAGE DROP:** Because these lamps are just 5, 7, 14 or 22 watts each, the worry of a voltage drop is non-existent. You could run twenty lights on one single run to your transformer!

**ENVIRONMENTALLY FRIENDLY:** These lamps are mercury-free, lead-free, RoHS compliant, UV free, and IR free.

### Advantages of 12V LEDs to YOU, the Installer:

- No underground conduit
- No permits required (exception in some areas—consult local building codes)
- No additional breakers/electrical components to install
- Cool White Color (5000K) simulates Moonlight  
Warm White Color (3500K) substitutes for Halogen applications
- Low Voltage + 22 Watts = Less Heat with same Light Output!
- And best of all... because they operate anywhere from 8-14VAC, there is Little to No Voltage Drop consideration!

### Cost Advantage of LEDs to YOU, the Homeowner:

#### LED ENERGY SAVINGS CALCULATOR:

$$\frac{\text{Old Watts} - \text{New Watts}}{1000} \times \text{Hours in Use} \times \text{Energy Rate} = \$ \text{ Savings}$$

So for example, replacing (8) 20 watt lights with (8) 5 watt LED lamps, burning 8 hours a night at \$.12/kwh (typical TXU rate):

$$.12 * 8 * .12 = \$.115 \text{ savings per day, which is } \$42 \text{ a year.}$$

This equates to a savings of **\$719** for the entire 50,000 hour life of the lamp!! Add that to your upfront savings of a 100 watt transformer versus a 300 watt (\$200), less wire for the entire system (\$50), and the replacement lamp costs you won't be needing (\$10 per 10,000 lamp for each fixture = \$400) and that is one heck of a savings!!

## Designing with LED Lights

### Can I replace one 100W MV with one LED light and have the same results?

Not exactly. A 100W MV light is 3000+ lumens with a 100° beam spread. For an LED light to compete in lumens, the beam spread must be reduced to anywhere from 25° to 80°; anything wider than that will result in much less measurable light on the ground. Therefore, to achieve the desired .1 fc on the ground from a moonlight downlight mounted 40' up in a tree, we recommend a ratio of about 3 LEDs to 2 MVs.

Consider the example below:



Shown with (4) 100W MV Downlights



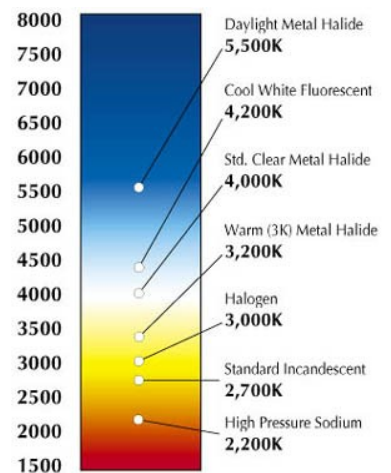
Shown with (7) 14W LED Downlights

These pictures were taken of a house with downlights mounted 40' high in mature red oak trees. You can see the difference in spread between the two scenarios. The Mercury Vapor scene on the left illuminates the roof of the house as well as the entire yard with just four fixtures. The LED scene on the right still has amazing light coverage on the ground, yet the spill-over light on the roof is gone. The electricity consumed on this property went from 400 watts (with the MV lights) to 105 watts (with the LEDs). That is a 75% drop in consumption!

### LED Lights: Warm White vs. Cool White

Typically Cool White (5000K) LEDs are used to illuminate in the landscape on trees, bushes, etc. The eye is used to seeing the cool moonlight hues coming through the trees at night, creating a very natural and serene setting. Cool White light enhances the color of foliage, making trees and vegetation look even greener and healthier. FYI—our new optional green Mercury Vapor lens makes the LED an even cooler 5500K.

Use Warm White (3500K) LEDs to light the house, fence, or other structures such as gazebos, arbors, or fountains. Warm White light brings out the texture of a surface and creates crisp and inviting light in seating or dining areas. The Kelvin Temperature chart to the left shows the various colors of light and where each light source is represented on the spectrum.



## Examples of How to Install Moon Visions' 12V LEDs

Moon Visions' 12V LEDs are the only ones like it on the market. It's never been feasible to illuminate 30+ foot tall trees in this way with LOW VOLTAGE! In the past you would have to use a multitude of fixtures to give you the punch and spread that one LED 12V light can do. And with the variety of sizes and wattages available in the Moon Visions 12V LED family of bullets...anything is possible.

### Install transformer at central location and wire as any other 12v installation

- Low watts = smaller transformer = big \$ savings!
- Make connections using direct burial silicone wire nuts—no bulky boxes!

-OR-

### Install 120VAC in conduit to each tree

- Add a 75 watt electronic transformer in standard junction box at the base of tree and run up with 12V wire.
- Use “buck/boost” transformer (100, 150, 250, 500 or 750 watts) at base of tree and run up with 12V wire.

**Bonus:** Because you are only adding minimal wattage with LEDs, it's often easy to tie into an existing low voltage system. And if you are planning a job with large trees AND other low voltage lights (path lights, underwater lights, etc.), you can tie them all in together on ONE transformer.



*This gorgeous Tennessee residence is illuminated with the Moon Visions 12V LED bullet series. The large trees have several MVL-D 22W R38s (pg. 3) mounted over 60 ft. high, giving the soft shadows of moonlight on the ground. The tree in the foreground is illuminated using a MVM-U 7W R30 uplight (pg 3).*



## Terms & Conditions of Sales

- Freight charges are not included on any shipments and are determined at the time of shipment processing.
- All discrepancies must be addressed no later than 10 days after delivery.
- If UPS /FedEx shipment is received damaged, report damage to us at once and hold original carton and merchandise for inspection.
- Returns will be fully refunded IF AND ONLY IF material has not been installed AND is in its original packaging – this does not apply to defective material returns.
- All fixtures have a 3 year warranty.
- All Moon Visions LED Lamps have a 3 year warranty from the date printed on the lamp. Please note that Moon Visions only warranties their LED Lamp in a Moon Visions fixture. No exceptions.
- Transformers have a 10-year warranty.
- Unique's Multi-Matic transformers & fixtures have a lifetime warranty.
- FX Luminaire warranties their fixtures working on an FX transformer for 10 years. However, they VOID all warranties if their fixtures are running on a Multi-matic (Unique) transformer.
- There is no warranty on light bulbs. Lamps are rated by hours according to the manufacturer, but does not guarantee a specific lamp life.
- Special order items (items not in our regular inventory) to be returned will incur a 50% restocking fee. Transportation charges must be prepaid by customer.

2025 - Landscape Lighting Supply

All rights reserved. Certain products illustrated in this catalog may be protected by applicable patents and patent pending. We reserve the right to change details of design, materials, and finishes in any way that will not alter installed appearance or reduce function and performance.



Landscape Lighting Supply  
780 S. Floyd Rd.  
Richardson, TX 75080  
1-800-238-0346  
[www.landscapelight.com](http://www.landscapelight.com)